

# DNA/RNA Shield™



**ZYMO RESEARCH**

*The Beauty of Science is to Make Things Simple*

**Catalog Nos:** R1100-50 (50 ml)  
R1100-250 (250 ml)  
R1200-25 (25 ml) 2X concentrate  
R1200-125 (125 ml) 2X concentrate

**Storage:** Reagent stable -80°C to 70°C.

## Features

- Eliminates cold-chain. Ensures DNA/RNA stability during sample transport/storage at ambient temperatures.
- Inactivates infectious agents (*viral, bacterial, fungal and parasitic*).
- Easy sample processing. DNA/ RNA can be isolated directly without sample precipitation or reagent removal (*compatible with most DNA and RNA purification kits/ high-throughput workflows*).

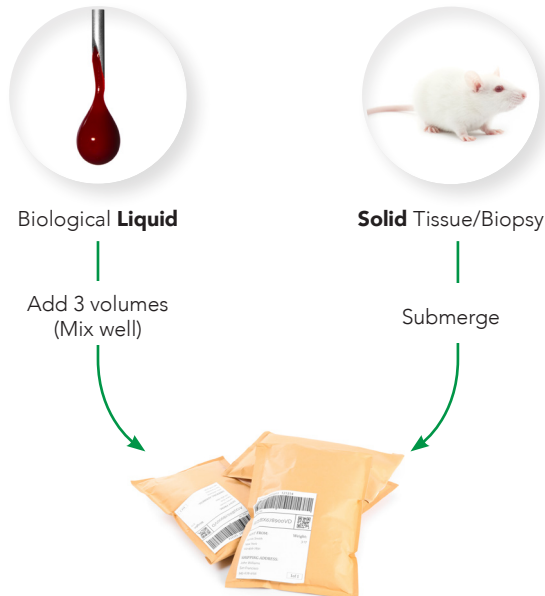
## Sample Stability

Samples in DNA/RNA Shield™ are stable for long periods of time before subsequent purification of high-quality DNA/RNA.

Temperature	Time
-20°C and below	Indefinite
4°C – 25°C (ambient)	Minimum 30 days
35-40°C	Up to 7 days

## Instructions for Sample Storage/Transport

### Just add DNA/RNA Shield™



### Transport at ambient temperature

(No cold-chain or dry-ice needed)

Unsure of sample type? Just add 9 volumes of DNA/RNA Shield™.  
If sample is viscous, add more DNA/RNA Shield™.

## Suggested Volumes

DNA/RNA Shield™	300 µl	600 µl
Cell pellets	10 <sup>6</sup>	10 <sup>7</sup>
Tissue	30 mg	60 mg
Biological liquid	100 µl	200 µl

DNA/RNA Shield™ (2X concentrate):

- (1) Use only for immediate sample processing/purification.
- (2) For sample storage, dilute with nuclease-free water (1:1) prior to use.

## DNA/RNA Purification

Samples in DNA/RNA Shield™ are directly compatible with:

- All Zymo Research Purification Kits.
- Most kits and workflows from Qiagen, Roche, Thermo-Fisher, Macherey Nagel, etc.
- High-throughput automated workflows from Hamilton, Tecan, bioMérieux, PerkinElmer, Eppendorf, Promega, etc.

Recommended Purification Kits for DNA/RNA Shield™:

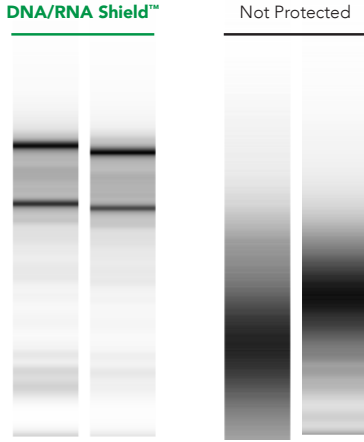
Product / Format	Size	Cat. No.
Quick-DNA/RNA™ Miniprep Plus Spin Column	50 preps	D7003
Quick-DNA/RNA™ MagBead Magnetic Bead	96 preps 384 preps	R2130 R2131

**ZYMO RESEARCH CORP.**

Phone: (949) 679-1190 • Toll Free: (888) 882-9682 • Fax: (949) 266-9452 • info@zymoresearch.com • www.zymoresearch.com

## Protection from freeze-thaw damage

Are your samples protected from the stress caused by freeze-thaw cycling? DNA/RNA Shield™ is not only beneficial for sample transport, but also for the long-term storage of biological samples. DNA/RNA Shield™ protects DNA/RNA from multiple freeze-thaw cycles, even in the most complex of samples (i.e., whole blood).



High quality RNA from blood stored in DNA/RNA Shield™ that was freeze-thawed from -80°C to room temperature.

## Pathogen Inactivation

DNA/RNA Shield abides by Center for Disease Control's (CDC) guidelines for pathogen inactivation.

Validated organisms by various research groups:

Bacteria	Viruses	Yeast & Eukaryotes
<i>B. subtilis</i>	Parvovirus	<i>C. albicans</i>
<i>E. faecalis</i>	Chikungunya Virus	<i>C. neoformans</i>
<i>E. coli</i>	Dengue Virus	<i>S. cerevisiae</i>
<i>L. fermentum</i>	Ebolavirus	<i>P. malariae</i>
<i>L. monocytogenes</i>	Herpes Simplex Virus-1	
<i>M. tuberculosis</i>	Herpes Simplex Virus-2	
<i>P. aeruginosa</i>	Influenza A	
<i>S. enterica</i>	Rhinovirus	
<i>S. aureus</i>	MERS-coronavirus	
<i>S. pneumoniae</i>	West Nile Virus	
<i>X. fastidiosa</i>		



Eurovir<sup>®</sup> Hygiene-Labor  
Antivirale Validierung & Rabies

## DNA/RNA Shield™ Collection Devices



Product	Description	Recommended processing
<b>Fecal collection tube</b> R1101	20 x 76 mm container prefilled with 9 ml DNA/RNA Shield™ for the direct collection of up to 1 gram or 1 ml stool. Collection spoon is included in the container screwcap.	ZymoBIOMICS™ DNA/RNA D4301 (spin-column); D4302 (magbead)
<b>Swab &amp; collection tube</b> R1106, R1107, R1108, R1109	12 x 80 mm self-centering screwcap container filled with DNA/RNA Shield™ (1 ml, 2 ml) and a sterile swab for specimen collection.	
<b>Saliva collection kit</b> R1210	Saliva collection tube with funnel and tube filled with 2 ml of DNA/RNA Shield™ for the direct collection of 2 ml saliva.	Quick-DNA/RNA™ Plus D7001 (spin-column); R2130 (magbead)
<b>Collection &amp; lysis tube</b> R1102, R1103, R1104, R1105	2 ml screw-cap tube with DNA/RNA Shield™ and Bashing Beads (lysis tubes: microbe, tissue, pathogen) for the collection and homogenization of tough-to-lyse samples.	
<b>Blood collection tube</b> R1150	16 x 100 mm evacuated blood tube filled with 6 ml of DNA/RNA Shield™ for the direct collection of 3 ml whole-blood (human or animal).	Quick-DNA/RNA™ Blood Tube R1151 (spin-column); R2130 (magbead)

For bulk reagent, large volume, and custom device requests, please contact Zymo Research directly.

### ZYMO RESEARCH CORP.

Phone: (949) 679-1190 • Toll Free: (888) 882-9682 • Fax: (949) 266-9452 • info@zymoresearch.com • www.zymoresearch.com

Ver. 2.0.0